

Activity ID	Activity Description	Orig Dur	Early Start	Early Finish	JAN	FEB	MAR	APR	MAY	JUN												
					22	5	12	19	26	5	12	19	26	3	9	16	23	30	7	14	21	28

ALL SECTIONS OF THE WORKS

SCHEDULE OF KEYDATES

KEY-52-100	Section II Completion	0		26APR07
KEY-54-200	Section IV Completion	0		30APR07
KEY-55-300	Section V Completion	0		31MAR07

SECTION II OF THE WORKS

AT GRADE SLIP ROAD 'A' & ASSOCIATED WORKS

Road Works				
SS2-GS4010	Misc. Rdworks/Kbs/Barriers/L. Post/Rd Ducts	15	23JAN07*	08FEB07
SS2-GS4020	Permanent Flex. Pavement @ Slip Rd. A	16	09FEB07	10MAR07
SS2-GS4030	Landscaping Works	5	12MAR07	18MAR07

HOLLOW STRUCTURE OF SLIP ROAD 'A'

Road Works				
SS2-GS4040	In-situ Parapet Construction / Drainage	30	23JAN07*	09MAR07
SS2-GS4050	Road Surfacing	15	12MAR07	28MAR07
SS2-GS4060	Installation of Parapet Railings	15	29MAR07	19APR07

AT GRADE SLIP ROAD 'D' & ASSOCIATED WORKS

Drainage Works				
SS2-GS0010	Construction of 225 U-channel	5	23JAN07*	27JAN07
SS2-GS0020	Construction of 375 U-channel	5	29JAN07	02FEB07
SS2-GS0030	Exc.Install.Backfill 600mm Drain Pipe	5	03FEB07	08FEB07

AT GRADE SLIP ROAD 'F' & ASSOCIATED WORKS

Road Works				
SS2-GSF010	Construction of Sub-soil Drain,DP,MH,Pipe Wks	20	23JAN07	14FEB07
SS2-GSF020	Backfilling to Road Formation Level	10	27FEB07	09MAR07
SS2-GSF030	Construction of U-channels	3	10MAR07	13MAR07
SS2-GSF040	Road Surfacing	10	18MAR07	27MAR07

Ecological Barrier Walls

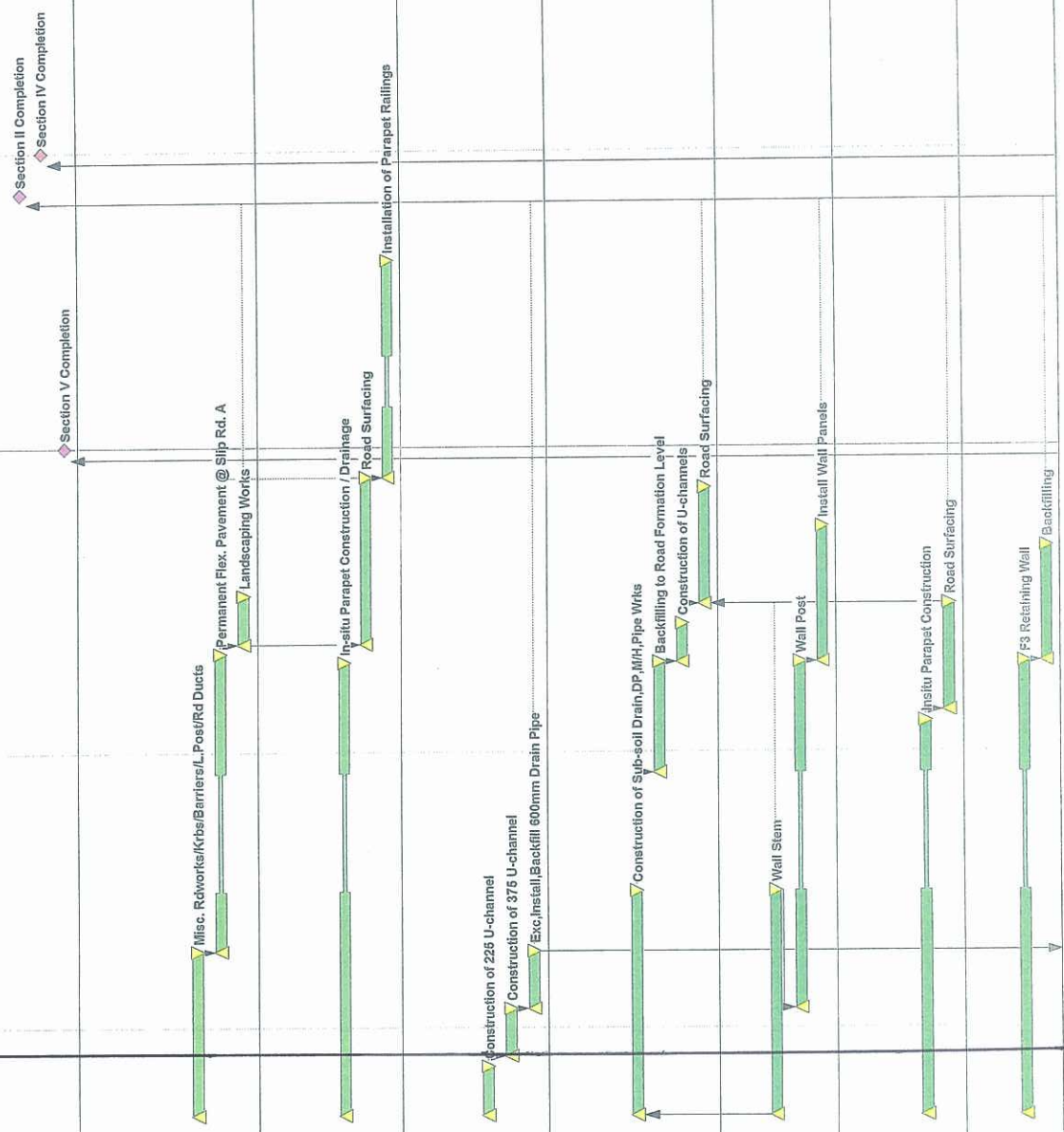
SS2-GSF050	Wall Stem	20	23JAN07*	14FEB07
SS2-GSF060	Wall Post	20	03FEB07	09MAR07
SS2-GSF070	Install Wall Panels	12	10MAR07	23MAR07

DECK OVER SLIP ROAD 'F'

Road Works				
SS2-OVF010	In-situ Parapet Construction	25	23JAN07*	03MAR07
SS2-OVF020	Road Surfacing	10	05MAR07	15MAR07

Retaining Wall adjacent to Pier F3

Construction of Retaining Wall				
SS2-OVF030	F3 Retaining Wall	30	23JAN07*	09MAR07
SS2-OVF050	Backfilling	10	10MAR07	21MAR07



22	JAN	23	5	12	19	26	3	9	16	23	30	7	14	21	28

Start Date: 19DEC06
 Finish Date: 30APR07
 Data Date: 19DEC08

19DEC06
 30APR07
 19DEC08

Early Bar
 Progress Bar
 Critical Activity

19DEC06
 30APR07
 19DEC08

Sheet 1 of 8

CHUN WO CONSTRUCTION & ENGINEERING CO. LTD.
 CONTRACT NO. HW/2004/03
 IMPROVEMENTS TO SAN TIN INTERCHANGE
 Works Programme (WP03)

Approved: J. Yip
 Checked: EPG
 Working Programme Rev. WP04
 Working Programme Rev. WP05
 Working Programme Rev. WP06

Date: 26JUN05
 03OCT05
 23JAN07

Revision: Working Programme Rev. WP04
 Working Programme Rev. WP05
 Working Programme Rev. WP06

Approved: J. Yip
 Checked: EPG
 Working Programme Rev. WP04
 Working Programme Rev. WP05
 Working Programme Rev. WP06

© Primavera Systems, Inc.

Activity ID	Activity Description	Orig Dur	Early Start	Early Finish
SS2-CAS010	Remove Existing Street Lamp Post	1	09FEB07*	09FEB07
SS2-CAS020	Dismantle Existing Traffic Sign	1	09FEB07	09FEB07
SS2-CAS030	Excavation for 300mm Drain Pipe & M/H M8.8	2	10FEB07	12FEB07
SS2-CAS040	Install 300mm Drain Pipe & Backfill	2	13FEB07	14FEB07
SS2-CAS050	Excavation for 450mm Drain Pipe & M/H M8.7	2	10FEB07	12FEB07
SS2-CAS060	Install 450mm Drain Pipe & Backfill	2	13FEB07	14FEB07
SS2-CAS070	Excavation for 525mm Drain Pipe	2	27FEB07	28FEB07
SS2-CAS080	Install 525mm Drain Pipe & Backfill	3	01MAR07	03MAR07
SS2-CAS090	Construct M/H M8.7 & M8.8 & Backfilling	5	01MAR07	06MAR07
SS2-CAS100	Construction of 450 U-channel	5	07MAR07	12MAR07
SS2-CAS110	Perm. Flexible Pavement	8	13MAR07	21MAR07
SS2-CAS120	Landscaping Works / Paving to Island	15	13MAR07	28MAR07

Crossing San Sham Rd (Portion under the Bridge)

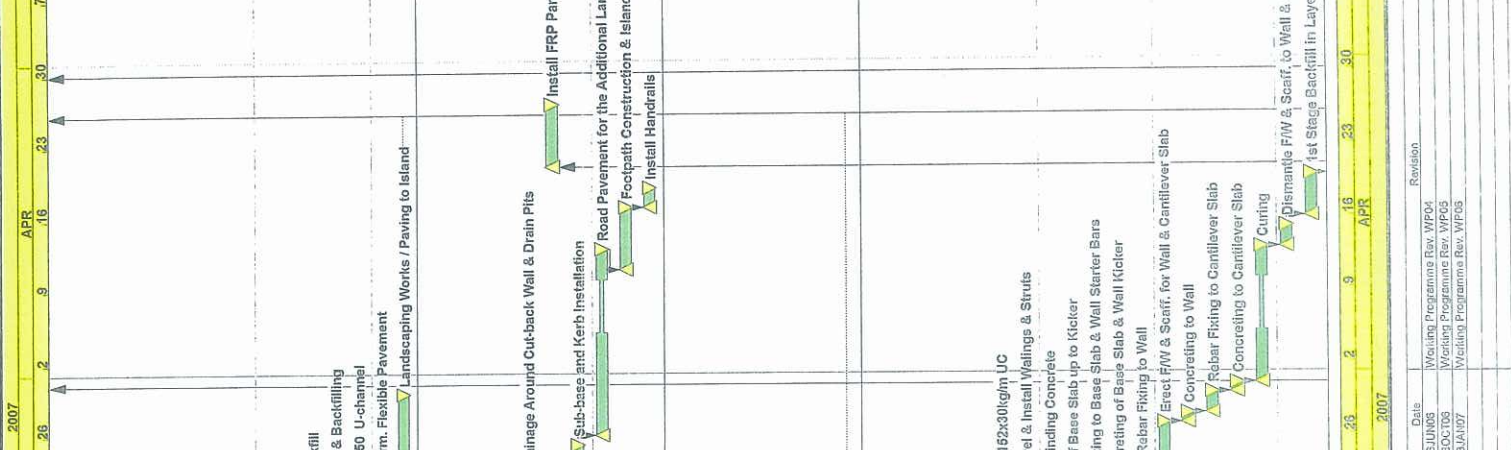
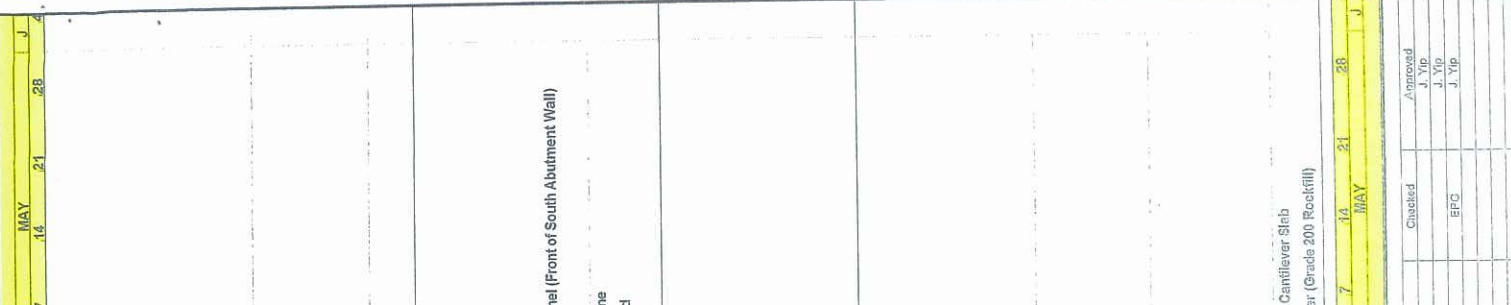
CAS-SSX010	Bulk Exc (Removal of Existing Steps @ Abutment)	7	23JAN07*	30JAN07
CAS-SSX020	1500dia Drain @ EM10-EM9	10	31JAN07	10FEB07
CAS-SSX030	Other Drainage Around Cutback Wall & Drain Pits	20	12FEB07	17MAR07
CAS-SSX040	Install FRP Panel (Front of South Abutment Wall)	5	21APR07	26APR07
CAS-SSX050	Sub-base and Kerb Installation	6	19MAR07	24MAR07
CAS-SSX060	Road Pavement for the Additional Lane	12	26MAR07	12APR07
CAS-SSX070	Footpath Construction & Island	5	11APR07	16APR07
CAS-SSX080	Install Handrails	2	17APR07	18APR07

Temporary Traffic Arrangement

SS2-SS1010	Advice to RMO for Inspection (7days advance)	0		23JAN07*
SS2-SS1020	Install Steel Plate @ Southbound Lane	1	23JAN07*	23JAN07
SS2-SS1030	Pre-opening Inspection of TTA w/ RMO	1	01FEB07	01FEB07
SS2-SS1040	Implement TTA & Traffic Diversion of SB	2	01FEB07	02FEB07
SS2-SS1050	Install Steel Plate @ Northbound Lane (Night)	1	02FEB07	02FEB07

Reinforced Earth Wall (Retaining Wall)

SS2-RTW010	1st Stage Exc. & Install 254x254x132kg/m UC	4	03FEB07	07FEB07
SS2-RTW020	2nd Stg Exc 1500x1300D Locally & Install Bracket	6	08FEB07	14FEB07
SS2-RTW030	2nd Stg Exc & Install Beams & Post	2	13FEB07	14FEB07
SS2-RTW040	3rd Stg Exc 1300D & Install 152x152x30kg/m UC	4	27FEB07	02MAR07
SS2-RTW050	Exc to Form. Level & Install Wallings & Struts	8	03MAR07	12MAR07
SS2-RTW060	Rock Fill & Blinding Concrete	2	13MAR07	14MAR07
SS2-RTW070	Erect FW of Base Slab up to Kicker	1	15MAR07	15MAR07
SS2-RTW080	Rebar fixing to Base Slab & Wall Starter Bars	2	16MAR07	17MAR07
SS2-RTW090	Concreting of Base Slab & Wall Kicker	1	19MAR07	19MAR07
SS2-RTW100	Rebar Fixing to Wall	3	20MAR07	22MAR07
SS2-RTW110	Erect FW & Scaff. for Wall & Cantilever Slab	3	23MAR07	26MAR07
SS2-RTW120	Concreting to Wall	1	27MAR07	27MAR07
SS2-RTW130	Rebar Fixing to Cantilever Slab	2	28MAR07	29MAR07
SS2-RTW140	Concreting to Cantilever Slab	1	30MAR07	30MAR07
SS2-RTW150	Curing	7	31MAR07	12APR07
SS2-RTW160	Dismantle FW & Scaff. to Wall & Cantilever Slab	2	13APR07	14APR07
SS2-RTW170	1st Stage Backfill in Layer (Grada 200 Rockfill)	4	16APR07	19APR07



MODIFICATION TO SAN SHAM RD. SOUTH ABUTMENT

Temporary Traffic Arrangement

Start Date, Finish Date, Date

Legend: 15DEC06 (Green), 20APR07 (Blue), 15DEC06 (Red)

Activity Bar, Progress Bar, Critical Activity

Start Date, Finish Date, Date

Legend: 15DEC06 (Green), 20APR07 (Blue), 15DEC06 (Red)

Activity Bar, Progress Bar, Critical Activity

CHUN WO CONSTRUCTION & ENGINEERING CO. L.TD.
CONTRACT NO. HY2004/09
IMPROVEMENTS TO SAN TIN INTERCHANGE
Works Programme (WP06)

Sheet 2 of 8

Approved: J.Y.P., J.Y.P., J.Y.P.

Checked: EPG

Date: 26JUN06, 05OCT06, 23JAN07

Revision: Working Programme Rev. WP04, Working Programme Rev. WP05, Working Programme Rev. WP06

Start Date, Finish Date, Date

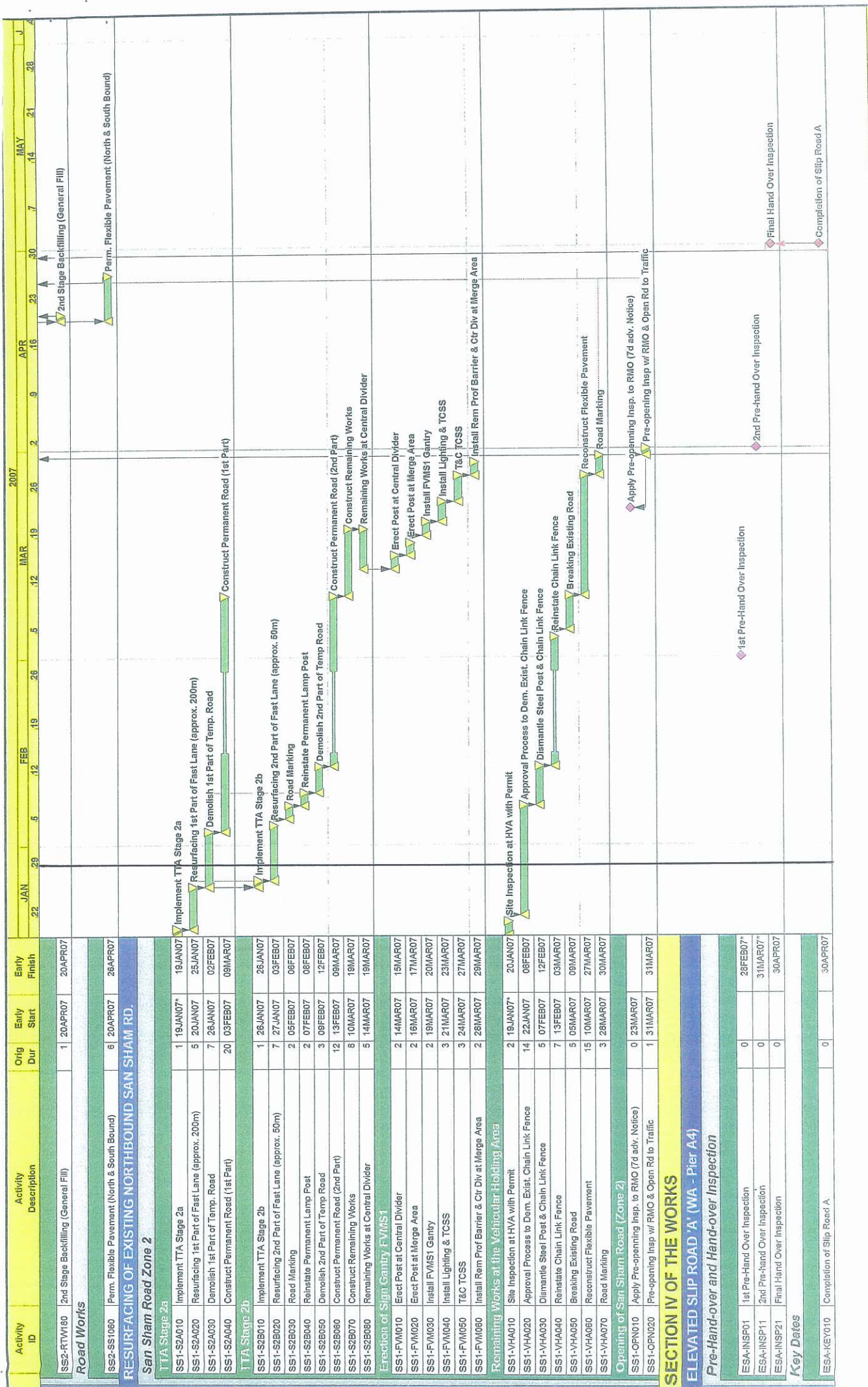
Legend: 15DEC06 (Green), 20APR07 (Blue), 15DEC06 (Red)

Activity Bar, Progress Bar, Critical Activity

Start Date, Finish Date, Date

Legend: 15DEC06 (Green), 20APR07 (Blue), 15DEC06 (Red)

Activity Bar, Progress Bar, Critical Activity



CHUN WO CONSTRUCTION & ENGINEERING CO. LTD.
CONTRACT NO. HY/2004/09
IMPROVEMENTS TO SAN TIN INTERCHANGE
Works Programmes (WIP06)

Sheet 3 of 8

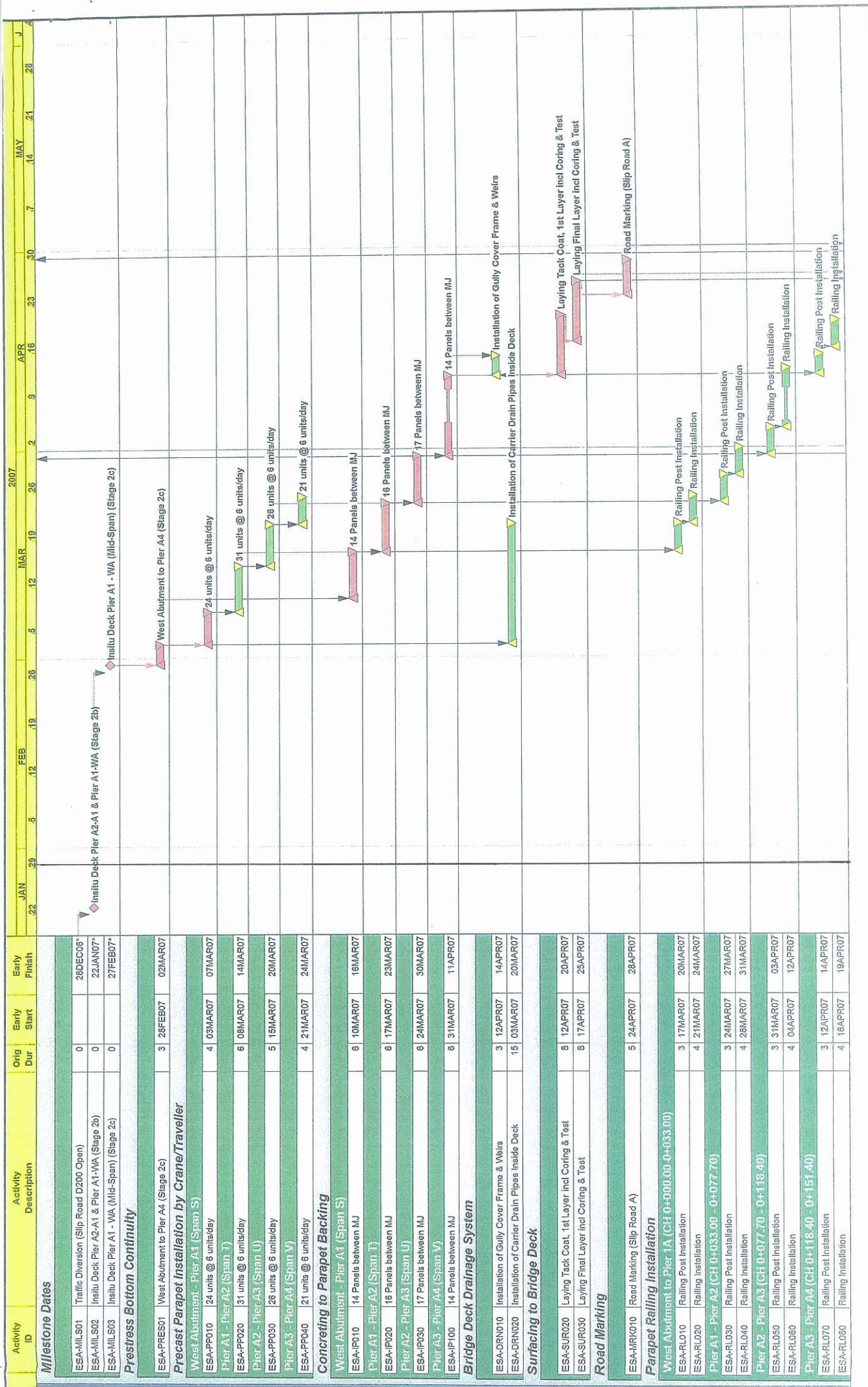
Date	Revision	Checked	Approved
25JUN05	Working Programme Rev. WIP04		J. Yip
02OCT05	Working Programme Rev. WIP05		J. Yip
22JAN07	Working Programme Rev. WIP06	EPG	J. Yip

Start Date: 13DEC06
 Finish Date: 30APR07
 Date: 19DEC06

Legend:
 Early Bar
 Progress Bar
 Critical Activity

2007: JAN, FEB, MAR, APR, MAY, JUN, JUL, AUG, SEP, OCT, NOV, DEC

2008: JAN, FEB, MAR, APR, MAY, JUN, JUL, AUG, SEP, OCT, NOV, DEC



Activity ID	Activity Description	Orig Dur	Early Start	Early Finish
Milestone Dates				
ESA-MLS01	Traffic Diversion (Slip Road D200 Open)	0		28DEC06
ESA-MLS02	In situ Deck Pier A2-A1 & Pier A1-WA (Stage 2b)	0		22JAN07
ESA-MLS03	In situ Deck Pier A1 - WA (Mid-Span) (Stage 2c)	0		27FEB07
Prestress Bottom Continuity				
ESA-PRES01	West Abutment to Pier A4 (Stage 2c)	3	28FEB07	02MAR07
Precast Parapet Installation by Crane/Traveller				
ESA-PP010	24 units @ 6 units/day	4	03MAR07	07MAR07
ESA-PP020	31 units @ 6 units/day	6	08MAR07	14MAR07
ESA-PP030	28 units @ 6 units/day	5	15MAR07	20MAR07
ESA-PP040	21 units @ 6 units/day	4	21MAR07	24MAR07
Concreting to Parapet Backing				
West Abutment - Pier A1 (Span S)				
ESA-IP010	14 Panels between MJ	6	10MAR07	16MAR07
ESA-IP020	16 Panels between MJ	6	17MAR07	23MAR07
ESA-IP030	17 Panels between MJ	6	24MAR07	30MAR07
ESA-IP100	14 Panels between MJ	6	31MAR07	11APR07
Bridge Deck Drainage System				
ESA-DRN010	Installation of Gully Cover Frame & Weirs	3	12APR07	14APR07
ESA-DRN020	Installation of Carrier Drain Pipes Inside Deck	15	03MAR07	20MAR07
Surfacing to Bridge Deck				
ESA-SUR020	Laying Tack Coat, 1st Layer incl Coring & Test	8	12APR07	20APR07
ESA-SUR030	Laying Final Layer incl Coring & Test	8	17APR07	25APR07
Road Marking				
ESA-MRK010	Road Marking (Slip Road A)	5	24APR07	28APR07
Parapet Railing Installation				
West Abutment to Pier 1A (CH 0+000.00 - 0+033.00)				
ESA-RL010	Railing Post Installation	3	17MAR07	20MAR07
ESA-RL020	Railing Installation	4	21MAR07	24MAR07
Pier A1 - Pier A2 (CH 0+033.00 - 0+077.70)				
ESA-RL030	Railing Post Installation	3	24MAR07	27MAR07
ESA-RL040	Railing Installation	4	28MAR07	31MAR07
Pier A2 - Pier A3 (CH 0+077.70 - 0+118.40)				
ESA-RL050	Railing Post Installation	3	31MAR07	03APR07
ESA-RL060	Railing Installation	4	04APR07	12APR07
Pier A3 - Pier A4 (CH 0+118.40 - 0+151.40)				
ESA-RL070	Railing Post Installation	3	12APR07	14APR07
ESA-RL080	Railing Installation	4	16APR07	19APR07

Date	Revision
28JUN05	Working Programme Rev. WPO4
03OCT06	Working Programme Rev. WPO5
23JAN07	Working Programme Rev. WPO6

Sheet 4 of 6
CHUN WO CONSTRUCTION & ENGINEERING CO. LTD.
 CONTRACT NO. HY/2004/09
 IMPROVEMENTS TO SAN TIN INTERCHANGE
 Works Programme (WPO6)

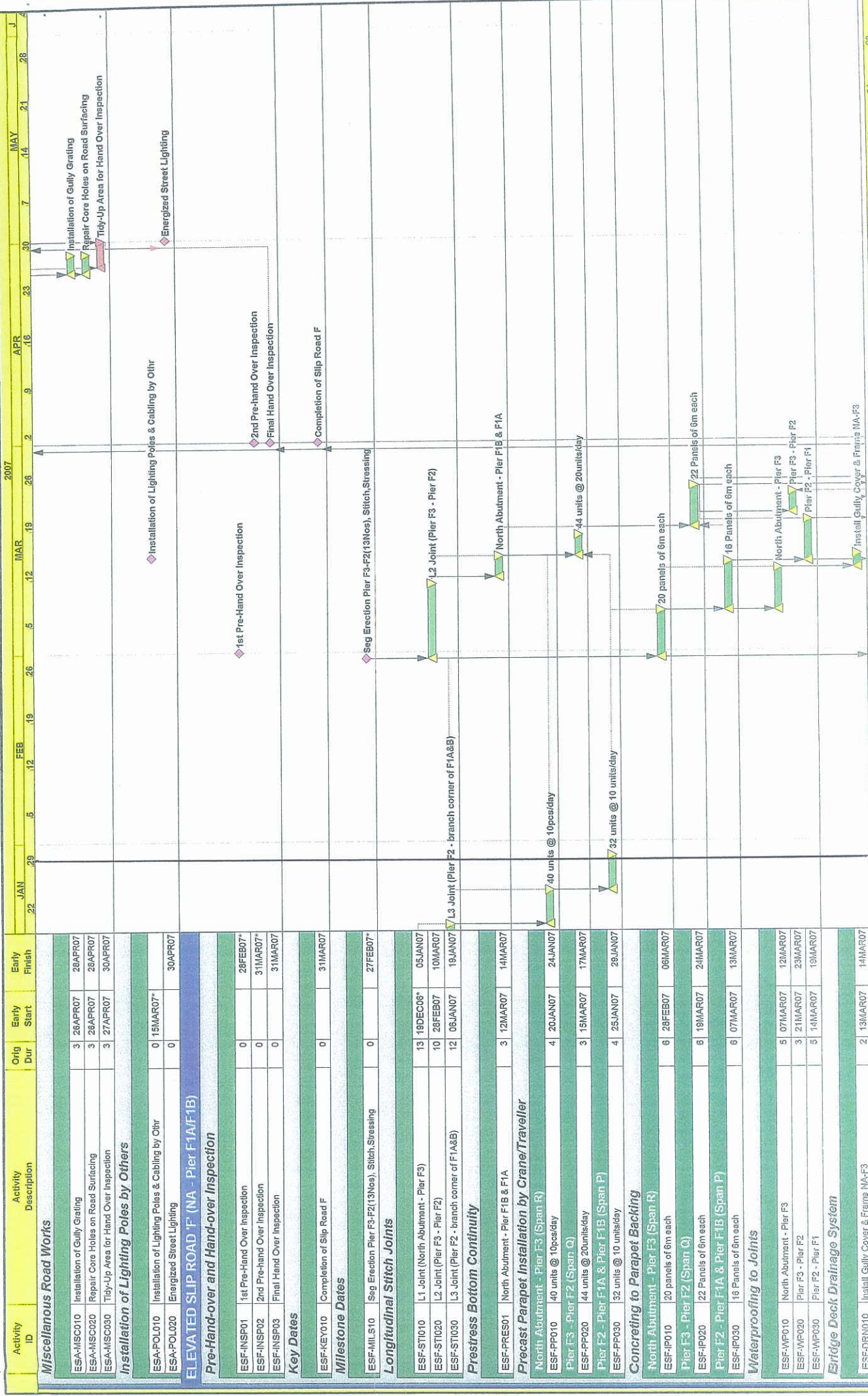
Start Date
 Finish Date
 Data Date

15DEC06
 30APR07
 15DEC08

Early Bar
 Progress Bar
 Critical Activity

Approved
 J.Yip
 J.Yip
 J.Yip

Checked
 EFG



Activity ID	Activity Description	Orig Dur	Early Start	Early Finish
Miscellaneous Road Works				
ESA-MSC010	Installation of Gully Grating	3	26APR07	28APR07
ESA-MSC020	Repair Core Holes on Road Surfacing	3	26APR07	28APR07
ESA-MSC030	Tidy-Up Area for Hand Over Inspection	3	27APR07	30APR07
Installation of Lighting Poles by Others				
ESA-POL010	Installation of Lighting Poles & Cabling by Othr	0	15MAR07*	30APR07
ESA-POL020	Energized Street Lighting	0		
ELEVATED SLIP ROAD F (NA - Pier F1A/F1B)				
Pre-Hand-over and Hand-over Inspection				
ESF-INSP01	1st Pre-Hand Over Inspection	0	28FEB07*	28FEB07*
ESF-INSP02	2nd Pre-Hand Over Inspection	0	31MAR07*	31MAR07*
ESF-INSP03	Final Hand Over Inspection	0	31MAR07	31MAR07
Key Dates				
ESF-KEY010	Completion of Slip Road F	0		31MAR07
Milestone Dates				
ESF-MIL S10	Seg Erection Pier F3-F2(13Nos), Slitch,Stressing	0		27FEB07*
Longitudinal Stitch Joints				
ESF-STI010	L1 Joint (North Abutment - Pier F3)	13	19DEC06*	05JAN07
ESF-STI020	L2 Joint (Pier F3 - Pier F2)	10	28FEB07	10MAR07
ESF-STI030	L3 Joint (Pier F2 - branch corner of F1A&B)	12	08JAN07	19JAN07
Prestress Bottom Continuity				
ESF-PRES01	North Abutment - Pier F1B & F1A	3	12MAR07	14MAR07
Precast Parapet Installation by Crane/Traveller				
ESF-PP010	North Abutment - Pier F3 (Span R)	4	20JAN07	24JAN07
Pier F3 - Pier F2 (Span Q)	40 units @ 10pcs/day			
ESF-PP020	Pier F2 - Pier F1A & Pier F1B (Span P)	3	15MAR07	17MAR07
Pier F2 - Pier F1A & Pier F1B (Span P)	44 units @ 20units/day			
ESF-PP030	32 units @ 10 units/day	4	25JAN07	29JAN07
Concreting to Parapet Backing				
ESF-IP010	North Abutment - Pier F3 (Span R)	6	28FEB07	06MAR07
Pier F3 - Pier F2 (Span Q)	20 panels of 6m each			
ESF-IP020	Pier F2 - Pier F1A & Pier F1B (Span P)	6	19MAR07	24MAR07
Pier F2 - Pier F1A & Pier F1B (Span P)	22 Panels of 6m each			
ESF-IP030	16 Panels of 6m each	6	07MAR07	13MAR07
Waterproofing to Joints				
ESF-WP010	North Abutment - Pier F3	5	07MAR07	12MAR07
ESF-WP020	Pier F3 - Pier F2	3	21MAR07	23MAR07
ESF-WP030	Pier F2 - Pier F1	5	14MAR07	19MAR07
Bridge Deck Drainage System				
ESF-DRN010	Install Gully Cover & Frame NA-F3	2	13MAR07	14MAR07

Start Date: 19DEC06
 Finish Date: 30APR07
 Date: 19DEC06

Legend:
 Early Bar
 Progress Bar
 Critical Activity

Sheet 5 of 8

WIP05

CHUN WO CONSTRUCTION & ENGINEERING CO. LTD.
 CONTRACT NO. HW2004/09
 IMPROVEMENTS TO SAN TIN INTERCHANGE
 Works Programme (WP-06)

2007
 JAN 22 29 5 12 19 26 3 10 17 24 31
 FEB 5 12 19 26 3 10 17 24 31
 MAR 5 12 19 26 3 10 17 24 31
 APR 5 12 19 26 3 10 17 24 31
 MAY 5 12 19 26 3 10 17 24 31

Checked: EPG
 Approved: J. Yip

Date: 26JUN06
 Working Programme Rev: WIP04
 03OCT06
 Working Programme Rev: WIP05
 23JUN07
 Working Programme Rev: WIP06

Activity ID	Activity Description	Orig Dur	Early Start	Early Finish
ESF-DRN020	Install Gully Cover & Frame F3-F2	2	23MAR07	24MAR07
ESF-DRN030	Install Gully Cover & Frame F2-F1	2	14MAR07	15MAR07
ESF-DRN040	Installation of Carrier Drain Pipes (Inside Deck)	15	28FEB07	16MAR07
Surfacing to Bridge Deck				
ESF-SUR020	Lay Tack Coat & 1st Layer incl Coring & Test	7	20MAR07	27MAR07
ESF-SUR030	Lay Final Layer incl Coring & Test	8	22MAR07	30MAR07
Road Marking				
ESF-MK010	Road Marking	5	27MAR07	31MAR07
Parapet Railing Installation				
North Abutment to Pier F3 Both Sides (55.193m)				
ESF-RL010	Railing Post Installation	3	08MAR07	10MAR07
ESF-RL020	Railing Installation	4	08MAR07	13MAR07
Pier F3 to Pier F2 Both Sides (61.663m)				
ESF-RL030	Railing Post Installation	3	26MAR07	28MAR07
ESF-RL040	Railing Installation	3	29MAR07	31MAR07
Pier F2 to Pier F1A & F1B Both Sides (48.026m)				
ESF-RL060	Railing Post Installation	3	12MAR07	14MAR07
ESF-RL080	Railing Installation	4	15MAR07	19MAR07
Miscellaneous Road Works				
ESF-MSC010	Installation of Gully Grating	4	27MAR07	30MAR07
ESF-MSC020	Repair Core Holes on Flexible Pavement	4	28MAR07	31MAR07
ESF-MSC030	Tidy-Up Area for Handover Final Inspection	5	27MAR07	31MAR07
Installation of Lighting Poles by Others				
ESF-POL010	Installation of Lighting Poles by Others	0	15MAR07*	
ESF-POL020	Energized Street Lighting	0		31MAR07

SECTION V OF THE WORKS
AT GRADE SLIP ROAD 'C'

Drainage Works

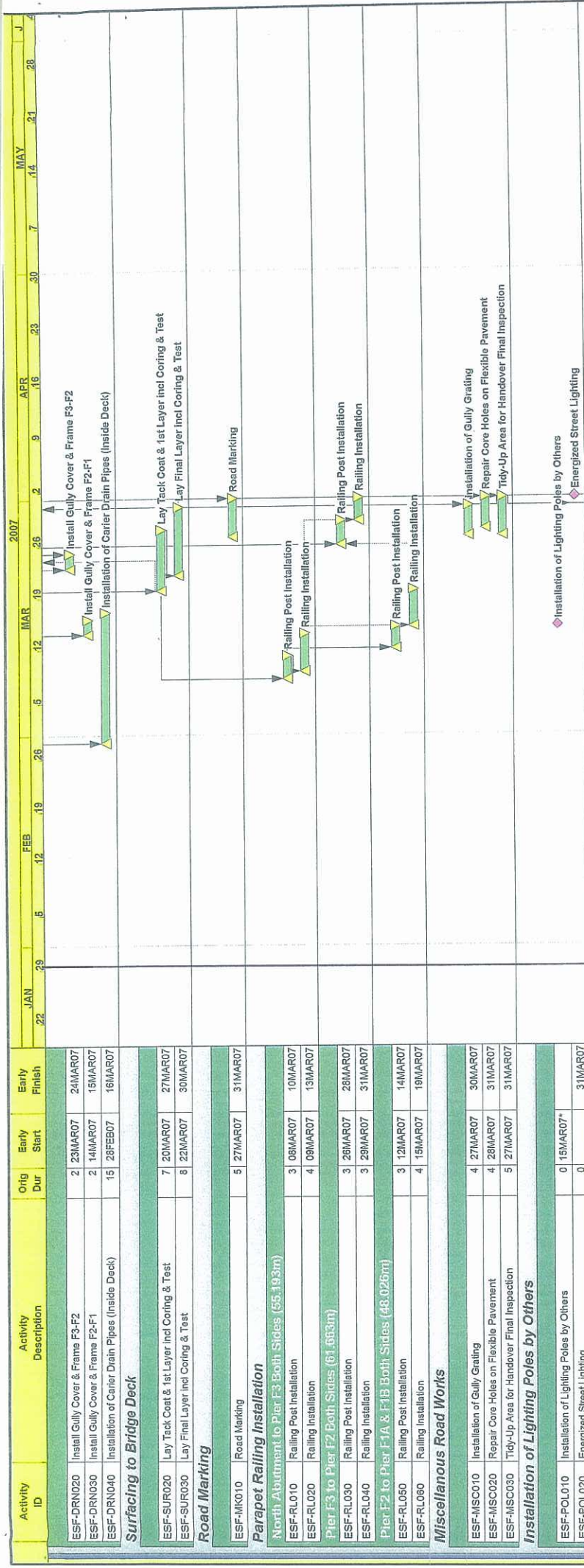
SSS-GSC010	Construct U-Channel (Hollow Section - S.Rd.C)	10	05FEB07	27FEB07
SSS-GSC020	Lay & Backfill 375d Pipes (CP14-Existing Nullah)	4	05FEB07	08FEB07
SSS-GSC030	Construct Head Wall No.2 (Inlet)	6	09FEB07	27FEB07
SSS-GSC040	Irrigation Works	12	14FEB07	10MAR07

Road Works

SSS-GSC060	Watermain 150dia. Pipe Connection	7	23JAN07*	30JAN07
SSS-GSC070	Cable Drawpit & Crossroad Ducts	4	31JAN07	03FEB07
SSS-GSC080	Road Works (Kerbs, Sub-Base, Flexible Pavement)	15	12MAR07	28MAR07
SSS-GSC090	Construction of Footpath (Formation, Paving Bloc)	8	22MAR07	30MAR07

Site Formation, Landscape, GTech Instr.

SSS-GSC100	Site Formation (M1 - M9)	30	23JAN07*	09MAR07
SSS-GSC120	Slope Wks & Gtech. Instrumentation	23	06FEB07	15MAR07
SSS-GSC130	Landscaping & Planting	26	01MAR07	30MAR07



Start Date: 15DEC06
Finish Date: 30APR07
Data Date: 15DEC06

15DEC06
30APR07
15DEC06

Early Bar
Progress Bar
Critical Activity

WP06

Sheet 6 of 8

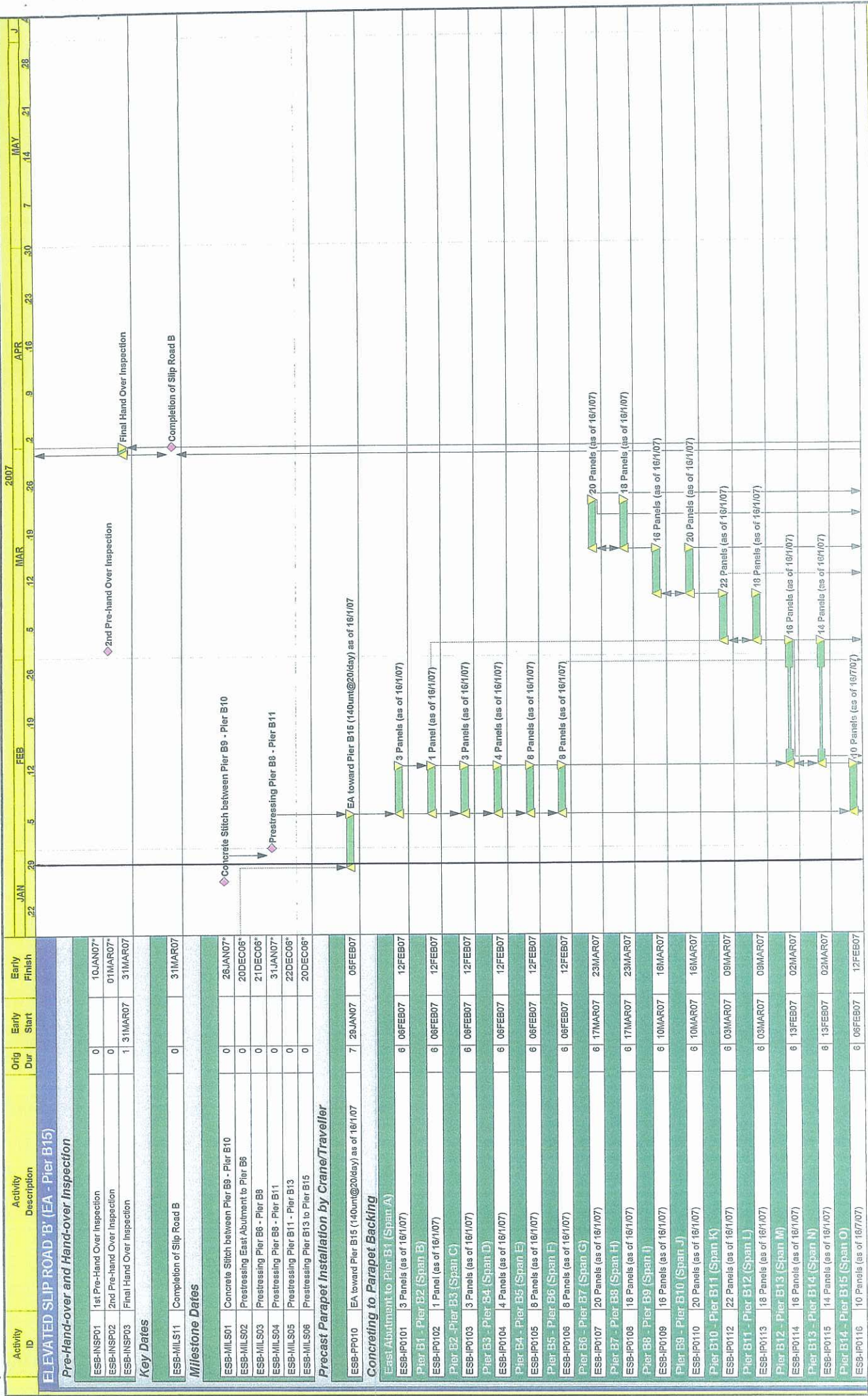
CHUN WO CONSTRUCTION & ENGINEERING CO. LTD.
CONTRACT NO. HY/2004/08
IMPROVEMENTS TO SAN TIN INTERCHANGE
Works Programme (WP06)

Date: 23JUN05
Working Programme Rev. WP01
23OCT05
Working Programme Rev. WP05
23JAN07
Working Programme Rev. WP06

Revision: Working Programme Rev. WP01
Working Programme Rev. WP05
Working Programme Rev. WP06

Checked: EFG
Approved by: J. Yip, J. Yip, J. Yip

2007
JAN 22 29 5 FEB 12 19 26 5 MAR 12 19 26 5 APR 9 16 23 30 7 MAY 14 21 28



Activity ID	Activity Description	Orig Dur	Early Start	Early Finish
ESB-INSP01	1st Pre-Hand Over Inspection	0	01JAN07*	01JAN07*
ESB-INSP02	2nd Pre-Hand Over Inspection	0	01MAR07*	01MAR07*
ESB-INSP03	Final Hand Over Inspection	1	31MAR07	31MAR07

Activity ID	Activity Description	Orig Dur	Early Start	Early Finish
ESB-MILS11	Completion of Slip Road B	0	31MAR07	31MAR07

Activity ID	Activity Description	Orig Dur	Early Start	Early Finish
ESB-MILS01	Concrete Stitch between Pier B9 - Pier B10	0	26JAN07*	26JAN07*
ESB-MILS02	Prestressing East Abutment to Pier B6	0	20DEC06*	20DEC06*
ESB-MILS03	Prestressing Pier B6 - Pier B8	0	21DEC06*	21DEC06*
ESB-MILS04	Prestressing Pier B8 - Pier B11	0	31JAN07*	31JAN07*
ESB-MILS05	Prestressing Pier B11 - Pier B13	0	22DEC06*	22DEC06*
ESB-MILS06	Prestressing Pier B13 to Pier B15	0	20DEC06*	20DEC06*

Activity ID	Activity Description	Orig Dur	Early Start	Early Finish
ESB-PP010	EA toward Pier B15 (140umt@20/day) as of 16/1/07	7	29JAN07	05FEB07

Activity ID	Activity Description	Orig Dur	Early Start	Early Finish
ESB-IP0101	East Abutment to Pier B1 (Span A)	6	06FEB07	12FEB07
Pier B1 - Pier B2 (Span B)	3 Panels (as of 16/1/07)	6	06FEB07	12FEB07
ESB-IP0102	Pier B2 - Pier B3 (Span C)	1	06FEB07	12FEB07
ESB-IP0103	Pier B3 - Pier B4 (Span D)	3	06FEB07	12FEB07
ESB-IP0104	Pier B4 - Pier B5 (Span E)	4	06FEB07	12FEB07
ESB-IP0105	Pier B5 - Pier B6 (Span F)	8	06FEB07	12FEB07
ESB-IP0106	Pier B6 - Pier B7 (Span G)	8	06FEB07	12FEB07
ESB-IP0107	Pier B7 - Pier B8 (Span H)	20	17MAR07	23MAR07
ESB-IP0108	Pier B8 - Pier B9 (Span I)	18	17MAR07	23MAR07
ESB-IP0109	Pier B9 - Pier B10 (Span J)	18	10MAR07	16MAR07
ESB-IP0110	Pier B10 - Pier B11 (Span K)	20	10MAR07	16MAR07
ESB-IP0112	Pier B11 - Pier B12 (Span L)	22	03MAR07	09MAR07
ESB-IP0113	Pier B12 - Pier B13 (Span M)	18	03MAR07	09MAR07
ESB-IP0114	Pier B13 - Pier B14 (Span N)	16	13FEB07	02MAR07
ESB-IP0115	Pier B14 - Pier B15 (Span O)	14	13FEB07	02MAR07
ESB-IP0116	10 Panels (as of 16/7/07)	6	06FEB07	12FEB07

Activity ID	Activity Description	Orig Dur	Early Start	Early Finish
ESB-IP0101	EA toward Pier B15 (140umt@20/day) as of 16/1/07	7	29JAN07	05FEB07

Activity ID	Activity Description	Orig Dur	Early Start	Early Finish
ESB-IP0101	EA toward Pier B15 (140umt@20/day) as of 16/1/07	7	29JAN07	05FEB07

Activity ID	Activity Description	Orig Dur	Early Start	Early Finish
ESB-IP0101	EA toward Pier B15 (140umt@20/day) as of 16/1/07	7	29JAN07	05FEB07

Activity ID	Activity Description	Orig Dur	Early Start	Early Finish
ESB-IP0101	EA toward Pier B15 (140umt@20/day) as of 16/1/07	7	29JAN07	05FEB07

Activity ID	Activity Description	Orig Dur	Early Start	Early Finish
ESB-IP0101	EA toward Pier B15 (140umt@20/day) as of 16/1/07	7	29JAN07	05FEB07

Activity ID	Activity Description	Orig Dur	Early Start	Early Finish
ESB-IP0101	EA toward Pier B15 (140umt@20/day) as of 16/1/07	7	29JAN07	05FEB07

Activity ID	Activity Description	Orig Dur	Early Start	Early Finish
ESB-IP0101	EA toward Pier B15 (140umt@20/day) as of 16/1/07	7	29JAN07	05FEB07

Activity ID	Activity Description	Orig Dur	Early Start	Early Finish
ESB-IP0101	EA toward Pier B15 (140umt@20/day) as of 16/1/07	7	29JAN07	05FEB07

Activity ID	Activity Description	Orig Dur	Early Start	Early Finish
ESB-IP0101	EA toward Pier B15 (140umt@20/day) as of 16/1/07	7	29JAN07	05FEB07

Activity ID	Activity Description	Orig Dur	Early Start	Early Finish
ESB-IP0101	EA toward Pier B15 (140umt@20/day) as of 16/1/07	7	29JAN07	05FEB07

Activity ID	Activity Description	Orig Dur	Early Start	Early Finish
ESB-IP0101	EA toward Pier B15 (140umt@20/day) as of 16/1/07	7	29JAN07	05FEB07

Activity ID	Activity Description	Orig Dur	Early Start	Early Finish
ESB-IP0101	EA toward Pier B15 (140umt@20/day) as of 16/1/07	7	29JAN07	05FEB07

Sheet 7 of 8

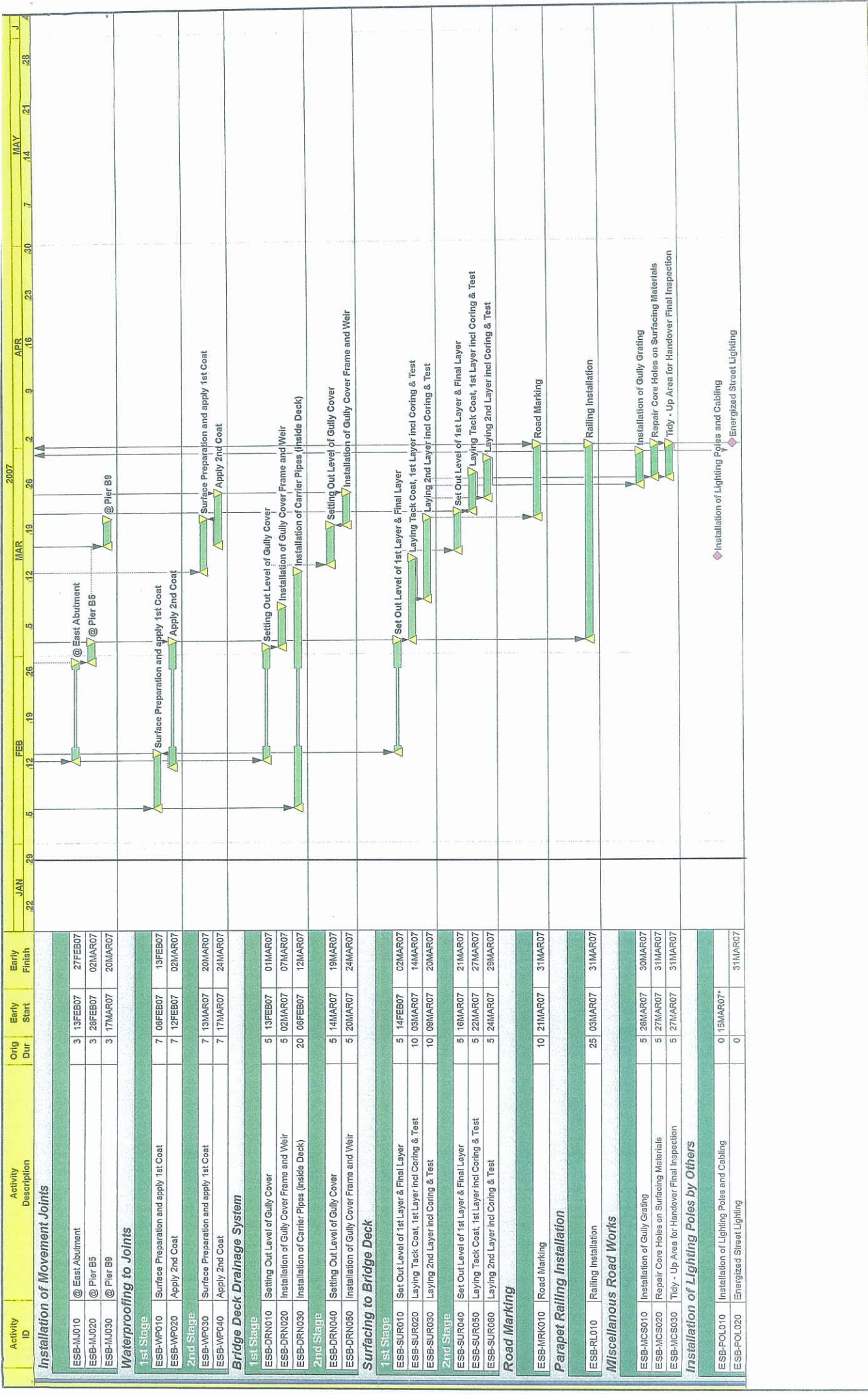
CHUN WO CONSTRUCTION & ENGINEERING CO. LTD.
 CONTRACT NO. HY/2004/09
 IMPROVEMENTS TO SAN TIN INTERCHANGE
 Works Programme (WIP06)

Start Date	Finish Date	Activity
19DEC06	20APR07	Early Bar
19DEC06	16DEC08	Progress Bar
		Critical Activity

Date	Revision	By	Check
26JUN06	Working Programme Rev. WIP01	J. Yip	J. Yip
03OCT06	Working Programme Rev. WIP03	J. Yip	J. Yip
23JAN07	Working Programme Rev. WIP06	J. Yip	J. Yip

Approved
J. Yip
J. Yip
J. Yip

Classified
EPG



Activity ID	Description	Orig Dur	Early Start	Early Finish
Installation of Movement Joints				
ESB-MJ010	@ East Abutment	3	13FEB07	27FEB07
ESB-MJ020	@ Pier B5	3	28FEB07	02MAR07
ESB-MJ030	@ Pier B9	3	17MAR07	20MAR07
Waterproofing to Joints				
1st Stage				
ESB-WP010	Surface Preparation and apply 1st Coat	7	06FEB07	13FEB07
ESB-WP020	Apply 2nd Coat	7	12FEB07	02MAR07
2nd Stage				
ESB-WP030	Surface Preparation and apply 1st Coat	7	13MAR07	20MAR07
ESB-WP040	Apply 2nd Coat	7	17MAR07	24MAR07
Bridge Deck Drainage System				
1st Stage				
ESB-DRN010	Setting Out Level of Gully Cover	5	13FEB07	01MAR07
ESB-DRN020	Installation of Gully Cover Frame and Weir	5	02MAR07	07MAR07
ESB-DRN030	Installation of Carrier Pipes (inside Deck)	20	06FEB07	12MAR07
2nd Stage				
ESB-DRN040	Setting Out Level of Gully Cover	5	14MAR07	19MAR07
ESB-DRN050	Installation of Gully Cover Frame and Weir	5	20MAR07	24MAR07
Surfacing to Bridge Deck				
1st Stage				
ESB-SUR010	Set Out Level of 1st Layer & Final Layer	5	14FEB07	02MAR07
ESB-SUR020	Laying Tack Coat, 1st Layer incl Coring & Test	10	03MAR07	14MAR07
ESB-SUR030	Laying 2nd Layer incl Coring & Test	10	09MAR07	20MAR07
2nd Stage				
ESB-SUR040	Set Out Level of 1st Layer & Final Layer	5	16MAR07	21MAR07
ESB-SUR050	Laying Tack Coat, 1st Layer incl Coring & Test	5	22MAR07	27MAR07
ESB-SUR060	Laying 2nd Layer incl Coring & Test	5	24MAR07	29MAR07
Road Marking				
ESB-MRK010	Road Marking	10	21MAR07	31MAR07
Parapet Railing Installation				
ESB-RL010	Railing Installation	25	03MAR07	31MAR07
Miscellaneous Road Works				
ESB-MCS010	Installation of Gully Grating	5	26MAR07	30MAR07
ESB-MCS020	Repair Core Holes on Surfacing Materials	5	27MAR07	31MAR07
ESB-MCS030	Tidy - Up Area for Handover Final Inspection	5	27MAR07	31MAR07
Installation of Lighting Poles by Others				
ESB-POL010	Installation of Lighting Poles and Cabling	0	15MAR07*	31MAR07
ESB-POL020	Energized Street Lighting	0		31MAR07

Start Date: 19DEC06
 Finish Date: 30APR07
 Data Date: 19DEC06

Legend:
 - Early Bar (Yellow)
 - Progress Bar (Green)
 - Critical Activity (Red)

Legend:
 - Installation of Lighting Poles and Cabling (Diamond)
 - Energized Street Lighting (Diamond)

Legend:
 - Working Programme Rev. WP04 (Blue)
 - Working Programme Rev. WP03 (Green)
 - Working Programme Rev. WP06 (Purple)

Legend:
 - Checked (Green)
 - EPG (Red)

Legend:
 - Approved (Blue)
 - J. Yip (Green)
 - J. Yin (Red)